



BVO616W

Ultra Wide Dynamic Range High Resolution Box Camera

Product Overview

Bavono BVO616W Ultra Wide Dynamic Range High Resolution Box Camera utilizes 1/3" Sony Dual Scan Super HAD CCD II Image Sensor with a high horizontal resolution of up to 700 TV Lines. This state-of-the-art camera features Ultra Wide Dynamic Range to deliver a true-color and well exposed picture even under the most extreme lighting conditions.

Wide Dynamic Range

In high contrast situations, when the field of view contains a wide range of lighting conditions such as backlight circumstances, overexposure of bright areas and underexposure of dark areas would have substantial adverse effects on the picture quality. Wide Dynamic Range cameras could overcome this problem by capturing both dark and light areas of an image and displaying the details of all areas in true-color including the darkest and the lightest areas.

Horizontal Resolution

Horizontal Resolution is one of the key factors in assessing the quality of cameras expressed in Television Lines (TVL). Optical low-pass filters are used in Bavono cameras to eliminate color aliasing. Serial Signal Processing and image enhancement technology delivers a high resolution of 700 TVL. The image quality is further enhanced via advanced image processing techniques and special algorithms.

Digital Noise Reduction

DSP (Digital Signal Processing) cameras utilize special digital noise reduction algorithms to significantly eliminate signal disturbances and color noise. As a result, motion blur is minimized to deliver high quality images.

Sens-up

Sens-up is an image processing technology that allows extra light to enter the camera in low light conditions, in order to deliver a clear image. This is achieved by adjusting the slow shutter speed to vary the amount of light received by the image sensor. A low-lux CCD camera with Sens-up technology is also known as a starlight camera.

Privacy Masking

The Privacy Masking function allows users to block out designated areas of a scene where video surveillance is not desirable.

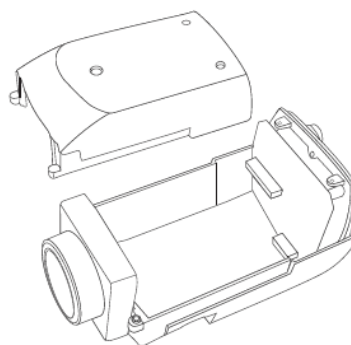
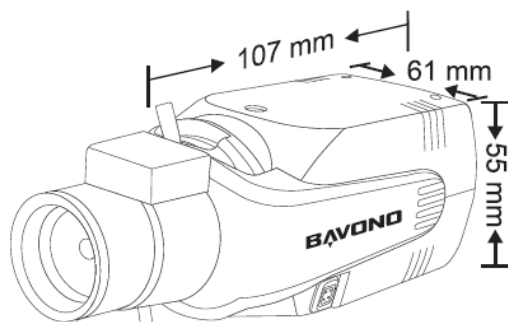
Key Features

- ▶ 1/3" Sony Dual Scan Super HAD CCD II Image Sensor
- ▶ Ultra Wide Dynamic Range
- ▶ Horizontal resolution of up to 700 TVL
- ▶ Sens-up X512 & minimum illumination of 0.0002 Lux
- ▶ Built-in IR-cut filter
- ▶ Day/night mode to enable continuous 24 hour surveillance
- ▶ 4 zones motion detection
- ▶ 15 zones privacy masking
- ▶ Intelligent 3D DNR for reducing HDD capacity
- ▶ Built-in OSD (on screen display)
- ▶ Built-in balun
- ▶ Supports dual power supply: DC 10V - 40V / AC 7V - 40V



1/3" SONY Dual Scan Super HAD CCD II	700 TVL	0.0002 Lux (Sens-Up On)	IR-Cut	Day / Night	2D+3D	15 Zones	OSD	X 512
Image Sensor	Resolution	Min. Illumination	Filter	Sensor Mode	DNR	Privacy Masking	Menu	Sens-Up

Dimensions



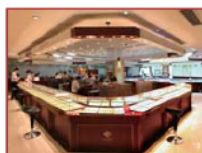
Specifications

Model	BVO616W	
Video Standard	NTSC	PAL
Image Sensor	1/3" SONY Dual Scan Super HAD CCD II	
Total Picture Elements	1020(H) X 508(V)	1020(H) X 596(V)
Effective Picture Elements	976(H) X 494(V)	976(H) X 582(V)
Synchronizing System	Internal, AC Line Lock	
Horizontal Resolution	700 TVL	
Minimum Illumination	Color: 0.1 Lux@F1.2(50IRE) / 0.0002 Lux(Sens Up X512) B/W: 0.08Lux@F1.2(50IRE) / 0.00015 Lux(Sens Up X512)	
Video S / N Ratio	52dB	
OSD Languages	English / Simplified Chinese / French / Portuguese / Spanish / Japanese / German / Russian	
Day / Night Mode	AUTO / DAY / NIGHT / EXT1 / EXT2 / CDS	
Highlight Compensation (HLC)	ON / OFF	
Backlight Compensation (BLC)	ON / OFF	
High Speed Shutter	1/60(1/50) ~ 1/10K /sec	
Flickerless Mode	ON / OFF	
Wide Dynamic Range	ON / OFF	
Auto Gain Control (AGC)	Level Setting	
IR-Cut Filter	Built-in	
Iris	DC Auto Iris / Manual Iris	
Digital Noise Reduction (2D+3D)	OFF / HIGH / MIDTHIGH / MID / MIDLOW / LOW	
Sens-up	X 512	
Smart IR	ON / OFF	
White Balance	ATW / PUSH / USER1 / USER2 / ANTI CR / MANUAL / PUSH LOCK	
Camera ID	ON / OFF (Letter A to Z, Numerals 0 to 9, Symbols)	
Motion Detection	4 Zones	
Privacy Masking	15 Zones	
Digital Zoom / DLS	RATIO / PAN / TILT	
Video Output	VBS 1.0V p-p (75ohm Terminated)	
Fast Connection	Built-in balun	
Power Input	DC 10V - 40V / AC 7V - 40V	
Power Consumption	Less than 1.8W	
Operating Temperature	- 10° C ~ +50° C	
Operating Humidity	Less than 90%	
Shell Material	Metal	
Dimensions (mm)	107 x 61 x 55	
Gross Weight (g)	531	

Applications



Banks



Jewellers



Casinos



Transit Stations



Petrol Stations



Schools

BVO616W

Ultra Wide Dynamic Range High Resolution Box Camera



NEW



Product Overview

Bavono BVO616W Ultra Wide Dynamic Range High Resolution Box Camera utilizes 1/3" Sony Dual Scan Super HAD CCD II Image Sensor with a high horizontal resolution of up to 700 TV Lines. This state-of-the-art camera features Ultra Wide Dynamic Range to deliver a true-color and well exposed picture even under the most extreme lighting conditions.

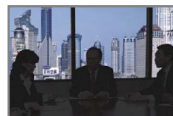
Product Features

- ♦ Wide Dynamic Range
- ♦ Horizontal Resolution of up to 700 TVL
- ♦ Sens-up X512 & minimum illumination of 0.0002 Lux
- ♦ Built-in IR-cut filter
- ♦ 15 zone privacy masking
- ♦ Intelligent 3D DNR for reducing hard drive capacity

♦ Wide Dynamic Range



WDR On



WDR Off

♦ Ultra High Resolution



700 TVL Camera

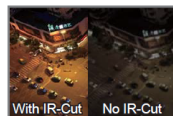


Ordinary Camera

♦ Built-in Auto IR-Cut Filter



With IR-Cut

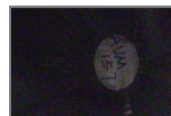


No IR-Cut

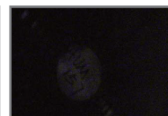
Daytime

Nighttime

♦ Minimum Illumination



Sens-up On



Sens-up Off

♦ Privacy Masking



With Privacy Masking



No Privacy Masking

♦ 3D Digital Noise Reduction



DNR On



DNR Off

Applications



Banks



Jewellers



Casinos



Transit Stations



Schools



Car Parks